



Komercijalna Banka AD Skopje

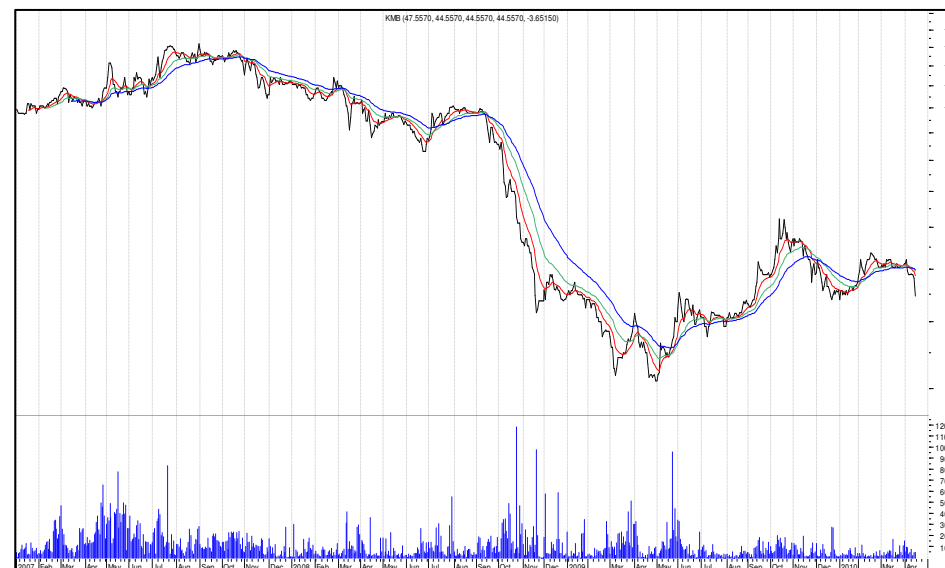
MSE ticker	KMB
Industry	Banking
Currency	EUR
DEN/EUR exchange rate	61,40
Dividend yield	6,33%
Total number of shares	2.014.067
52W Range	30,94-63,52
DATE	14/04/2010
Price	48,86
Market Cap	98.407.182

Financial Snapshot for 4Q 2009

Net Interest Income	37.710.993
Net Fees and Commissions	11.659.642
Net Trading Income	268.208
Net Income	17.491.987
Loans	570.837.427
Total Assets	988.797.997
Total Liabilities	875.502.687
Deposits	838.819.674
Total Shareholders' Equity	113.295.309
Book Value per Share	56
Dividend per Share	3,09

Annual financial statements

	2009	2008	2007
Net Interest Income	37.710.993	36.237.980	34.558.860
Net Fees and Commissions	11.659.642	15.577.801	13.467.134
Net Trading Income	268.208	-901.531	1.242.329
Net Income	17.491.987	22.436.319	16.480.407
Loans	570.837.427	632.767.573	750.252.020
Total Assets	988.797.997	897.724.414	862.376.450
Total Liabilities	875.502.687	795.713.111	776.618.502
Deposits	838.819.674	768.903.078	750.252.020
Total Shareholders' Equity	113.295.309	102.011.303	85.757.948
Book Value per Share	56	51	43
Dividend per Share	3,09	3,09	3,09
Price at the end of the year	48,86	44,79	112,21



Price Multiples

P/E	5,63x
P/B	0,87x

*the graph price is in denars

the price

- 12 day moving average
- 28 day moving average
- 50 day moving average

Financial Ratios

ROA	1,77%
ROE	15,44%
Cost / Income Ratio	26,81%
Loan / Assets Ratio	59,92%
Loan/ Deposits Ratio	70,64%
Cash/Total Assets	27,33%
Dividend Yield	6,33%

Financial Ratios

	2009	2008	2007
ROA	1,77%	2,50%	1,91%
ROE	15,44%	21,99%	19,22%
Cost / Income Ratio	26,81%	22,37%	20,95%
Loan / Assets Ratio	59,92%	70,49%	87,00%
Loan/ Deposits Ratio	70,64%	82,29%	96,82%
Cash/Total Assets	27,33%	27,72%	19,94%
Dividend Yield	6,33%	6,91%	2,76%